

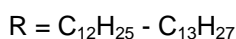
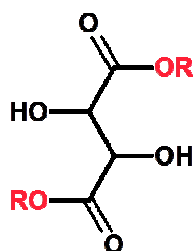
COSMACOL[®] ETI

Technical Data Sheet No. 5006 – July 2013

Product Description

COSMACOL[®] ETI is the tartaric di-ester of ISALCHEM[®] 123 alcohols. It is manufactured in Terranova dei Passerini (LO) plant.

Chemical structure is the following:



CAS registry no. 94095-06-4
 EC no. 302-210-0
 INCI name Di-C12-13 Alkyl Tartrate

Sales Specification

Property	Test Method	Unit	Specification ¹
√ Appearance @ 20°C	Visual	-	Clear liquid
√ Colour	RCM 3607	APHA	50 max
√ Purity as Ester	RCM 1201	wt%	90 min
√ Free Alcohol	RCM 1201	wt%	10 max
√ Acid Value	RCM 3817	mgKOH/g	3.0 max
√ Water (K.F.)	RCM 3804	wt%	1.0 max

√ values reported on inspection certificate.

1 - Specification No. D008920 rev. 2 of November 19th, 2002.

Additional Properties

Property	Test Method	Unit	Typical Value
Viscosity @ 20 °C	ASTM D7042-04	MPa*s	approx. 291
Density @ 20 °C	ASTM D7042-04	g/cm ³	approx. 0.956
Pour Point	RCM 3629	°C	approx. -39
Flash Point	RCM 3628	°C	approx. 168
Refractive Index @ 20°C	RCM 3619	-	approx. 1.459
HLB required	Calculated	-	13
Iodine Number	RCM 3848	g/100g	< 1
Total Aerobic Microbial Count	Eu.Ph. 5.1.4	CFU/g	< 100
Total Yeasts/Moulds Count	Eu.Ph. 5.1.4	CFU/g	< 10

RCM are Sasol Italy analytical methods, internal or referred to international standard. Additional information available upon request.

COSMACOL[®] ETI

Technical Data Sheet No. 5006 – July 2013

Main Applications

COSMACOL[®] ETI is a polar emollient effective as dispersing agent for inorganic pigments in make-ups thus improving overall stability of final formulation and ability to form thinner film.
This di-ester is also reliable alternative to castor oil in make up products to achieve better spreadability.
COSMACOL[®] ETI is also used in hair care products where it improves glossing effect.

Handling and Storage

It is suggested to store COSMACOL[®] ETI at temperature below 30°C and to protect from moisture and heating sources.
COSMACOL[®] ETI has a pour point lower than -20°C and therefore it can be handled without difficulty even at temperature around 0°C.
COSMACOL[®] ETI shelf life is 24 months from production date for product is in its original sealed packaging.

Packaging

COSMACOL[®] ETI is supplied in 25 and 190 kg drums. Details on available packaging can be obtained from sales department.

Data regarding safety, transport classes, toxicology and biodegradability of the product can be obtained from the corresponding material safety data sheet.

Sasol Italy S.p.A.

Headquarters

Viale Forlanini, 23
20134 Milano, Italy
Phone +39-02 58453 1
Fax +39-02 58453 285

Technical Customer Support

Via E. Mattei, 4
26827 Terranova dei Passerini (LO), Italy
Phone +39-0377 463 1
Fax +39-0377 463 226

The information and data presented in this sheet represent our best knowledge of the products, but are not a guarantee of the performance of their derivatives, since the conditions of use are not under our direct control. Furthermore, nothing indicated herein should be considered as a guideline to the use of the product, particularly should this result in infringement of any patent right of manufacture or use COSMACOL[®] is a Sasol Italy S.p.A. trademark.