

COSMACOL ELI

Technical Data Sheet No. 5001 – December 2015



sasol

Distribuito da:



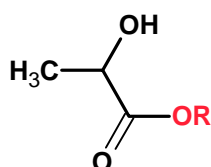
Tellerini s.p.a.

Via Bonazzi, 36
40013 Castel Maggiore (BO)
Tel: +39 051 6322111
Fax: +39 051 715380
sicurezza@tellerini.it
www.tellerini.it

Product Description

COSMACOL ELI is the lactic ester of ISALCHEM 123 alcohols.

It is manufactured in Terranova dei Passerini (LO) plant. The chemical structure is the following:



R = C₁₂H₂₅ - C₁₃H₂₇ (primary mono-branched)

EINECS no. 939-514-3
INCI C12-13 ALKYL LACTATE

Sales Specification

Property	Test Method	Unit	Guaranteed Value ¹
√ Appearance at 20°C	Visual	-	Clear liquid
√ Esters purity	RCM 1111	% mass	≥ 88,0
√ Free Alcohol	RCM 1111	% mass	≤ 12,0
√ Acid number	RCM 3817	mg KOH / g	≤ 3,0
√ Free Water (Karl Fischer)	RCM 3804	% mass	≤ 0,5
√ Colour	RCM 3607	APHA	≤ 50

√ value reported on inspection certificate.

¹ specification No. 8500 rev. 4 of April 14th 2010.

Additional Properties

Property	Test Method	Unit	Typical Value
HLB required	Calculated	-	11
Refractive Index @ 20°C	ASTM D1218	-	1,445
Iodine Number	ASTM D5768	g/100g	< 1
Pour point	ASTM D97	°C	< -55
Viscosity at 20°C	ASTM D445 / ASTM D7042	cSt	21
Density at 20°C	ASTM D7042 / ASTM D4052	kg/m ³	923
Flash point	ASTM D 93	°C	> 125

RCM and MPL are Sasol Italy analytical methods, internal or referred to international standard. Additional information available upon request.

**sasol**

COSMACOL ELI

Technical Data Sheet No. 5001 – December 2015

Further information

Heavy metal

Arsenic (As) less than 1 mg/kg	Cadmium (Cd) less than 1 mg/kg
Cobalt (Co) less than 1 mg/kg	Chromium (Cr) less than 1 mg/kg
Copper (Cu) less than 1 mg/kg	Iron (Fe) less than 2 mg/kg
Manganese (Mn) less than 1 mg/kg	Nickel (Ni) less than 1 mg/kg
Lead (Pb) less than 1 mg/kg	Tin (Sn) less than 1 mg/kg
Strontium (Sr) less than 1 mg/kg	Zinc (Zn) less than 1mg/kg

Heavy metal content is periodically checked (ICP method); data given here have to be considered as typical.

Preservative

COSMACOL ELI does not contain any preservative. COSMACOL ELI is not susceptible to microbial growth because of absence water content.

Property	Test Method	Unit	Typical Value
Total Aerobic Microbial Count	Eu.Ph. 5.1.4	CFU/g	< 100
Total Yeasts/Moulds Count	Eu.Ph. 5.1.4	CFU/g	< 10

Microbiological control test is periodically done; data given here have to be considered as typical.

Antioxidants

COSMACOL ELI does not contain any antioxidant.

Pesticides

COSMACOL ELI does not contain any pesticide.

Product origin

COSMACOL ELI is manufactured from following raw materials:

- Alcohols C₁₂ – C₁₃ mono-branched with synthetic origin
- Lactic acid with vegetable origin

Main Applications

COSMACOL ELI is a polar emollient used in personal cleansing and skin care formulations.

COSMACOL ELI has moisturising and mild keratolytic effect, used in skin care formulations with different types of skin, from dry to greasy and for delicate and atopic skins.

COSMACOL ELI is a thickening agent in combination with SLES-Betaine system with anti-irritant properties, mainly used in personal care formulations.

COSMACOL ELI is a mild body odour reducing agent which allows to lower the amount of actives in antiperspirants and deodorants.

COSMACOL[®] ELI is used as wetting and dispersing agent in make-up.



sasol

COSMACOL ELI

Technical Data Sheet No. 5001 – December 2015

Handling and Storage

It is suggested to keep COSMACOL ELI at temperature below 30°C, it is preferable to protect from heating and moisture sources in order to minimise hydrolysis phenomena.

COSMACOL ELI is a clear liquid at room temperature it becomes a solid wax at temperature lower than -55°C.

At room temperature COSMACOL ELI is not water soluble.

Shelf-life is 24 months from production date for product in its original and sealed packaging.

Packaging

COSMACOL ELI is generally supplied in drums, details on available packaging can be obtained from sales department.

Data regarding safety, transport classes, toxicology and biodegradability of the product can be obtained from the corresponding material safety data sheet.

Sasol Italy S.p.A.

Headquarters
Viale Forlanini, 23
20134 Milano, Italy
Phone +39-02 58453 1
Fax +39-02 58453 285

Technical Customer Support
Via E. Mattei, 4
26827 Terranova dei Passerini (LO), Italy
Phone +39-0377 463 1
Fax +39-0377 463 226

This information is based on our present knowledge and experience. but it is not a guarantee of the performance of our products since the conditions of use are not under our direct control.

However, it implies no liability or other legal responsibility on our part, including any existing third party intellectual property rights, especially patent rights. In particular, no warranty, whether express or implied, or guarantee of product properties in the legal sense is intended or implied. We reserve the right to make any changes according to technological progress or further developments. All our business transactions shall be governed exclusively by our General Sales Conditions.

Sasol is a registered trademark of Sasol Ltd. Product trademarks displayed in this document are the property of the Sasol Group of Companies. Users of this document are not permitted to use these trademarks without the prior written consent of their proprietor. All rights not expressly granted are reserved.